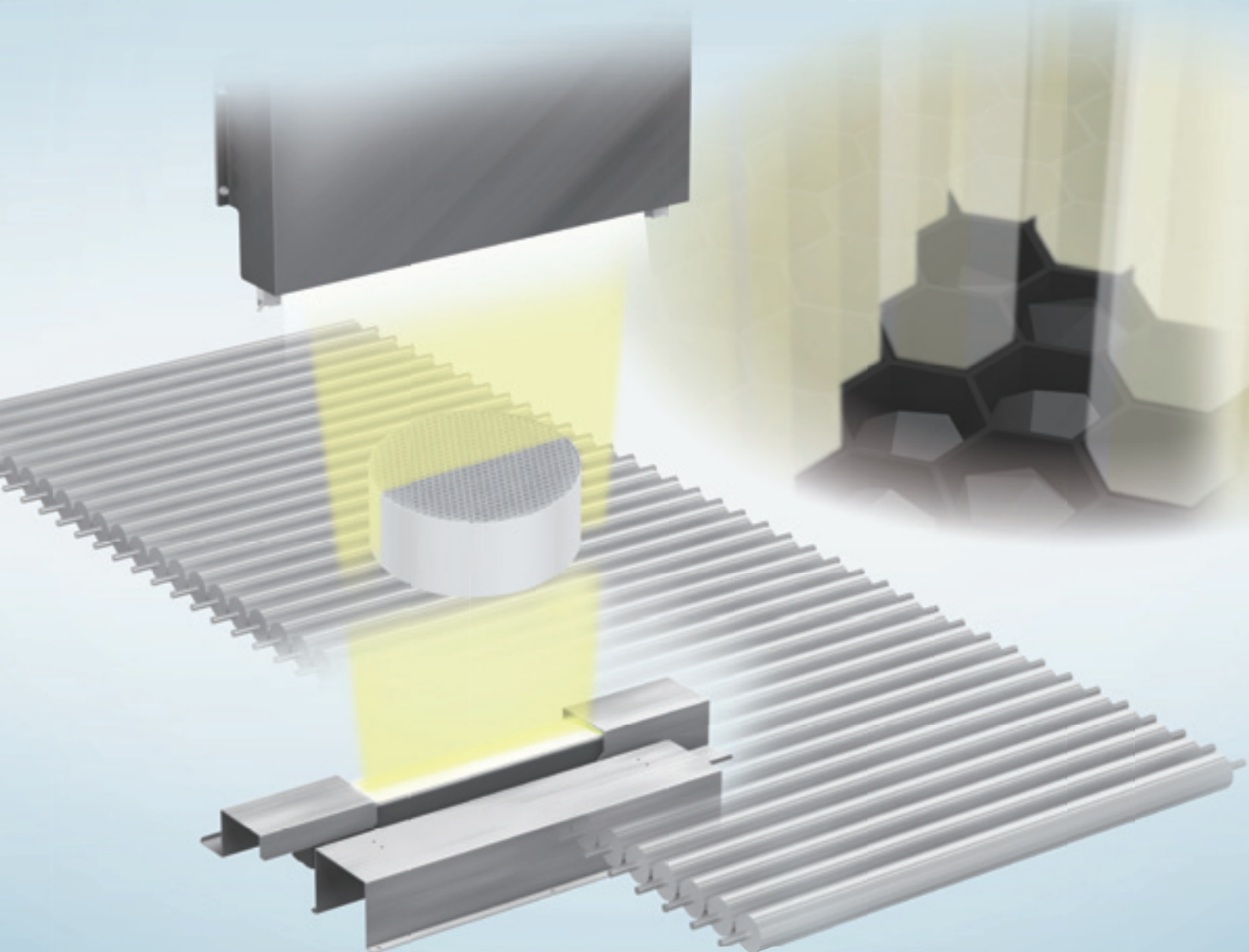


Ikegami

HIE-111

Honeycomb structure visual inspection system

Cell plugging of the porous honeycomb structure can be inspected automatically by this vision system for the production quality control, counting the cell number and measuring the cell size.



HIE-111 Honeycomb structure visual inspection system

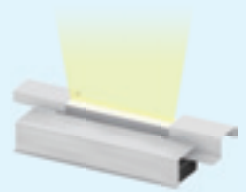
High resolution image acquisition

High performance line sensor cameras are employed and they can contribute higher precise inspection minimizing the lens aberration for the widely required field of view.



Optimized illumination

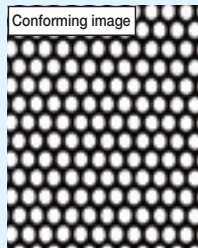
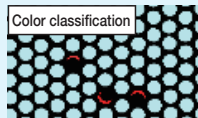
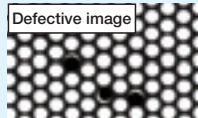
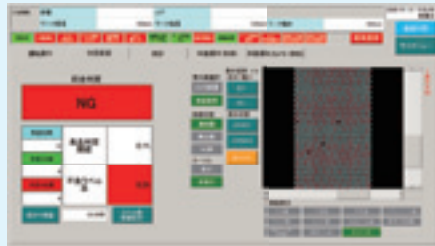
The optimized illumination is designed for the size, color and material of the inspection objects.



User friendly operation

Touch panel operation can lead the operators for the easy settings and inspection procedure.

Inspection Result



The inspection sensitivity settings can be set according to the products.

Static Information



Inspection results can be viewed with the graphs and numbers, and the images can be recorded and displayed.

Simulation view



Inspection simulation can be available with the saved defect data.



Specifications

Objects	Porous honeycomb structure
Camera	Line sensor camera
Lighting	Line-type LED etc
Object size	Width 400mm, Length 400mm or phi 400mm
Performance	Minimum phi 1mm cell
Tact time	Minimum 5 seconds (at phi 150mm size of object)
Functions	Cell plugging detection, Cell number counting, Cell size measurement, Static information viewing, Image recording, Simulation, Inspection history viewing, Speed tracking, System log recording etc
Loading speed	200mm / sec to 500mm / sec
Operation temperature	10-35 degrees C
Operation humidity	20-80% RH (at no condensations)
Options	External input / output, Marking machine, Loading machine, Remote monitoring. *The power consumption, outline and weight should vary according to the system configuration and designing.

Design and specifications are subject to change without notice.

Ikegami Tsushinki Co., Ltd.

■ URL: www.ikegami.co.jp/en/

U443A202-SZ0.2

- Head Office : 5-6-16 Ikegami, Ohta-ku, Tokyo 146-8567, Japan TEL.+81-(0)3-5700-1111 / FAX.Head Office +81-(0)3-5700-1137
- Inspection Solution Sales Department : 5-6-16 Ikegami, Ohta-ku, Tokyo 146-8567, Japan ... TEL.+81-(0)3-5748-2255 / FAX.+81-(0)3-5700-4120
- Beijing Office : Tower A Room No.823-824 Jia Tai International Mansion No.41
East Fourth Ring Road,Chaoyang District,Beijing ,ChinaTEL / FAX.+86-(0)10-85710350

Ikegami Electronics (U.S.A.), INC.

■ URL: www.ikegami.com

- Headquarters : 300E State Route 17S, Mahwah, NJ 07430 USA TEL.+1-201-368-9171 / FAX.+1-201-569-1626

Ikegami Electronics (Europe) GmbH

■ URL: www.ikegami.de

- Headquarters : Ikegami Strasse 1, D-41460 Neuss, Germany TEL.+49-(0)2131-1230 / FAX.+49-(0)2131-102820

Ikegami Electronics Asia Pacific Pte.Ltd.

■ URL: sg.ikegami.co.jp

- Headquarters : 1 Tampines Central 5, #06-04 CPF Tampines Building, Singapore 529508..... TEL.+65-6260-8820 / FAX.+65-6260-8896

