

# Ikegami

# UNICAM XE

## HDK-X500

HD Portable Camera System



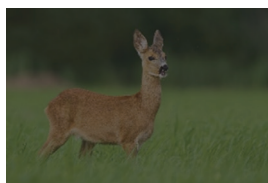
Featuring the latest 2/3-inch Global Shutter CMOS sensor combined with advanced digital signal processing technology, the HDK-X500 HD Portable Camera System brings uncompromised image quality with higher levels of performance. It is ideal for a broad range of production applications.

### Global Shutter CMOS Sensor

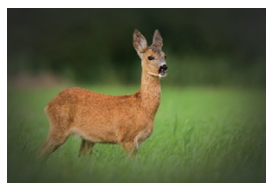
The latest 2/3-inch CMOS sensor incorporates global shutter pixel architecture, enabling the HDK-X500 to capture natural images.

### Optical Vignetting Correction (OVC) \* with supported lenses

Automatic electronic compensation for F-drop and vignetting through the lens zoom range.



F-drop



Vignetting



Automatic correction

(Simulated images)

### Remote Back Focus Adjustment (RBF) \* with supported lenses

The RBF Adjustment function helps setting accurate back focus even when the camera head is located in an environment where it is hard to reach the back focus adjustment.

### Dual Optical Filters

The same ND & CC dual optical filter system used in high-end models contributes to the optimal control of lights, whether shooting outdoors or in a studio environment.

### 16-axis Color Corrector

The more precise control of tones and hues empowers improved color matching as well as creating the desired artistic vision.

### High Dynamic Range HDR

By selecting HLG for the gamma curve for HDR capturing, the HDK-X500 produces stunning visuals with rich gradation across the entire dynamic range.

## OCP-500 Operation Control Panel

With a slim panel surface measuring just 82mm (3.23 inches) wide, the newly developed OCP-500 offers space-saving efficiency without compromising functionality.



OCP-500

## BSX-100 4K/HD Base Station type-H

It is a powerful tool designed to boost higher levels of performance with a variety of future-proof options, including 4K upscaleable and the support of ST 2110 Media-over-IP.



BSX-100



MoIP Module (option)



## Specifications

Signal Format	1080p (59.94, 50 Hz), 1080i (59.94, 50 Hz), 720p (59.94, 50 Hz) 1080p (23.98, 29.97, 25 Hz)*, 1080i (119.88, 100 Hz)* *option
Image Sensor	3-CMOS, Global Shutter
Optical System	2/3-inch R/G/B Prism
Lens Mount	B4 mount bayonet
S/N Ratio	62 dB (typ.)
Limiting Resolution	1000 TVL (typ., at center, 5% Modulation)
Sensitivity (at 2000 lux, 89.9% reflex)	F11 (1080i/59.94) F12 (1080i/50)
Modulation Depth	60% (typ.)

Design and specifications are subject to change without notice.



### Ikegami Tsushinki Co., Ltd.

■ URL: [www.ikegami.co.jp/en/](http://www.ikegami.co.jp/en/)

- Headquarters : 5-6-16 Ikegami, Ohta-ku, Tokyo 146-8567, Japan ..... TEL.+81-(0)3-5700-1111
- Beijing Office : Tower A Room No.823-824 Jia Tai International Mansion No.41  
East Fourth Ring Road,Chaoyang District,Beijing ,China ..... TEL.+86-10-8571-0350

U523C246-SELF

### Ikegami Electronics (U.S.A.), INC.

■ URL: [www.ikegami.com](http://www.ikegami.com)

- Headquarters : 300 Route 17 South, Mahwah, NJ 07430 USA ..... TEL.+1-201-368-9171

### Ikegami Electronics (Europe) GmbH

■ URL: [www.ikegami.de](http://www.ikegami.de)

- Headquarters : Ikegami Strasse 1, D-41460 Neuss, Germany ..... TEL.+49-(0)2131-1230

### Ikegami Electronics Asia Pacific Pte.Ltd.

■ URL: [sg.ikegami.co.jp](http://sg.ikegami.co.jp)

- Headquarters : 1 Tampines Central 5, #06-04 CPF Tampines Building, Singapore 529508 ..... TEL.+65-6260-8820



Certified JQA-0755 Certified JQA-EM3688