



## HLM-905WR 9-inch HDTV/SDTV Multi-format LCD Color Monitor

RoHS

High-End Broadcast LCD Monitor



The HLM-905WR is a compact light weight 9-inch LCD monitor, supporting 3G/HDTV/SDTV multi-format SDI and VBS inputs as standard. For its LCD panel, it employs a high resolution WXGA(1280x768) panel incorporating the latest IPS technology with LED back-light, and wide viewing angle. It can be rack mounted in dual monitor configuration, ideal for use in a full range of applications.

The HLM-905WR is low in power consumption, supporting either AC or DC powering.

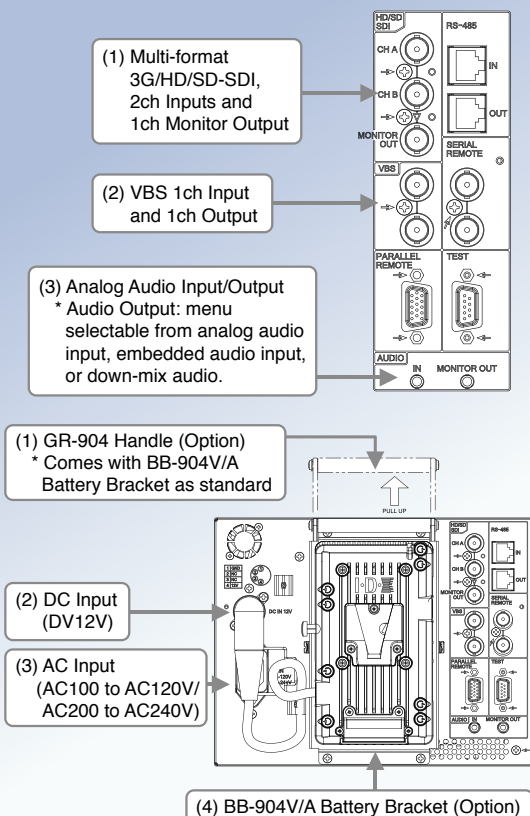
Battery operation is available using an optional battery bracket. The monitor has a USB connector on the operation panel, allowing setup file store & recall, as well as, remote operation from a mouse for menu navigation, including user maker operation, etc.

<b>9-inch Wide</b>	<b>WXGA</b> (1280x768 pixel)	<b>AC:23W</b> <b>DC:20W</b>	<b>Viewing Angle</b> 176degree(H/V)	<b>Contrast Ratio</b> <b>1000:1</b>	<b>AC Input</b>	<b>DC Input</b>
<b>Battery</b> ▲	*1 Supports after Rev1					
<b>VBS Input</b>	<b>3G/HD/SD(4:2:2)-SDI Input</b>	<b>Embedded Analog Audio Output</b>	<b>Embedded Audio Meter</b>	<b>Analog Audio 2ch Input</b>	<b>5.1ch Surround Down-mix</b>	<b>ASP-100</b> ▲ *1
<b>4:3/16:9</b>	<b>Remote (Parallel)</b>	<b>Remote (Serial)</b>	<b>Remote (Mouse)</b>	<b>Remote (RS485)</b> ▲	<b>Marker</b>	<b>User Marker</b>
<b>Shadow</b>	<b>Test Signal Generator</b>	<b>10-Color temperature-memory</b>	<b>Speaker</b>	<b>Stereo Headphone Jack</b>	<b>VITC Display</b>	<b>WFM Display</b>
<b>Split Screen/ Full Screen Comparison</b>	<b>Dot-by-Dot Display</b>	<b>Vector Scope Display</b>	<b>Mouse Menu Control</b>	<b>USB Memory (Data/Picture)</b>	<b>IMD Display</b>	
*222.4x*173.0x69.5mm (*8.8x*6.8x*2.8 inches)		<b>4RU</b>	Approx. 2.0kg* (4.41lbs) * Excluding Stand			

▲ Option

## Evolutionary Features for HLM Series Multi-format LCD Monitors

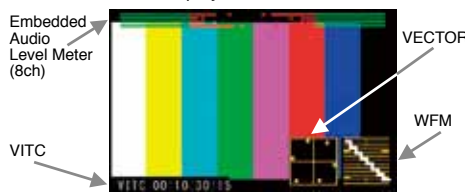
### ● Variety of Input/Output for HLM-905WR



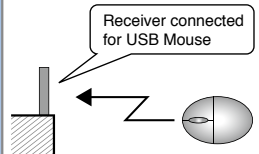
### ● Versatile Functions

\* Except HLM-5013WR/HLM-7012WR

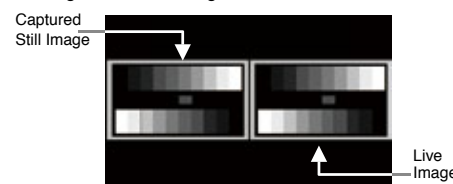
(1) Embedded Audio Level Meter, WFM, VECTOR SCOPE, VITC Display



(4) Monitor Menu can be controlled by USB Mouse from remote position

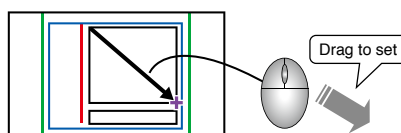


(2) Split Screen Mode, allows comparing a captured still image and a live image



- (5) Internal Test Signal Generator
- (6) USB Memory Port
- (7) Dot-by-Dot Display
- (8) Marker Display, within 80% thru 99% by 1% steps
- (9) Embedded Audio can be monitored by built-in Speaker or Headphone
- (10) 5.1ch Down-Mix, 5.1ch Surround Audio can be down-mixed to 2ch output
- (11) IMD Display (HLM-905WR only)

(3) User Marker Display, up to 10 lines or Box Markers with up to 6 colors can be freely set to help plan the layout of information (Patent Pending)



\*HLM-905WR supports 10 different Scene Files display

## ASP-100

### Auto Setup Probe

The ASP-100 is an auto setup probe that allows automatic white balance adjustment for a selected color temperature and measurements of color temperature and luminance on the HLM/HEM Series of LCD/OLED Monitors and the HTM-1990R CRT monitor.

For HLM Series Monitors



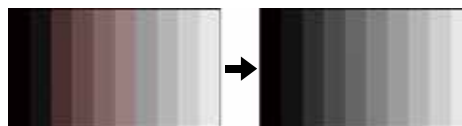
Simply connect the ASP cable to USB interface

Monitor	Integrated software		Integrated Rev# of ASP-100
	MPU	FPGA	
HLM-904WR/WCS	V1.20~		
HLM-1704WR/WS	V0.94~		
HLM-1750WR	V1.02~		
HLM-2450W	V2.02~	V20~	
HLM-2450WA	V0.94~		
HLM-2450WB	V0.76~		
HLM-3250W	V2.02~	V20~	
HLM-1504WR			
HLM-905WR/WCS			after Rev1
HLM-907WR			after Rev1
HLM-1751WR			after Rev1
HEM-1770WR			after Rev2
HEM-2570W			after Rev2

### Features

#### (1) Automatic white balance adjustments by color temperature file

The probe automatically adjusts white balance at multiple luminance levels to one of 4 user selectable color temperature files (6500K, 9300K, and 2 user files).



#### (2) Measurement Mode

This Mode allows measurement of color temperature on the monitor, storing the measured data and making adjustments on multiple monitors for same color temperature.

#### (3) PC-free operation

Automatic adjustment software is programmed in a monitor. Simply connect the ASP cable to the monitor USB connector. No personal computer is required.

### Specifications

<b>ASP-100</b>	Auto setup	: 6500K, 9300K, User files (2 files)
	Measurement	: Luminance and chromaticity (x, y)
	Size	: 71(W)×111(H)×35(D)mm
	Weight	: 100g
	Interface	: USB2.0
<b>ASP-CONV</b>	Size	: 82(W)×64(H)×32.3(D)mm
	Weight	: 130g
	Interface	: USB2.0, RS-232C

### Remote Controller



**SRC-400**  
Serial Remote Controller



**RCT-30A**  
Infrared Remote Controller

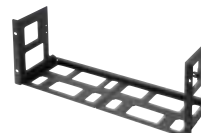


**ASP-100**  
Auto Setup Probe Unit

### Rackmount Adaptor



**RS-1710T/1770T**  
19-inch Rack-mount Adaptor



**DR-904**  
9-inch Rack-mount Adaptor



**BP-920**  
Blank Panel for DR-904

### Stand



**STD-1770**  
Stand



**STD-1770T**  
Tilt Stand



**STD-1722M**  
VESA Arm Stand



**STD-1517**  
Stand



**STD-1517T**  
Tilt Stand



**STD-904**  
Stand



**STD-900**  
Stand



**STD-920T**  
Tilt Stand

### Battery Bracket



**BB-1750A**  
Battery Bracket  
(Anton Bauer Type)



**BB-1750V**  
Battery Bracket  
(V-Mount Type)



**BB-904A**  
Battery Bracket  
(Anton Bauer Type)



**BB-904V**  
Battery Bracket  
(V-Mount Type)

### Handle



**GR-1770**  
Handle

### Carrying Case/Hood



**CC-1751**  
Hard Carrying Case



**CC-5003/7002**  
Hard Carrying Case



**SO-016**  
Soft Carrying Case



**MH-1750**  
Collapsible Hood



**MH-904**  
Collapsible Hood



**PP-1751**  
LCD Protection Cover



**PP-904**  
LCD Protection Cover

Model	Description	HLM-2570W	HLM-1770WR	HLM-1751WR	HLM-3250WB	HLM-2450WB	HLM-1705WR	HLM-905WR	HLM-5013WR	HLM-7012WR	Remarks
<b>Remote Controller</b>											
RCT-30A	Infrared Remote Controller	●	●	●	●	●					
SRC-400	Serial Remote Controller	●	●	●	●	●	●	●			Controls up to 96 monitors with loop through connection
<b>Video/Audio Module</b>											
SP-70	SFP I/F Module	●	●	●							Expansion module to equip the SFP I/F module. Two SFP modules can be equipped. *can not co-reside with CM-70
CM-70	Analog RGB/YPbPr/PC Input Module	●	●	●							1ch Y, P <sub>b</sub> , P <sub>r</sub> or RGB Input, 1ch loop through EXT SYNC, 1ch Analog PC Input. *can not co-reside with SP-70
CM-175	Analog Component and PC Input Module					●					1ch Y, P <sub>b</sub> , P <sub>r</sub> or RGB Input, 1ch loop through EXT SYNC*1
CM-240	Analog Component and PC Input Module				●						1ch Y, P <sub>b</sub> , P <sub>r</sub> /RGB, 1ch Analog PC Input, 1ch EXT SYNC*1
D3G-240A	3G-SDI Support Multi-format HD-SDI Input Module (incl. Analog Audio Output)				●	●					2ch Input and 1ch Loop-through, 2ch (ch: Menu Select) Embedded Analog Output (XLR 5pin)*1
D3G-240D	3G-SDI Support Multi-format HD-SDI Input Module (incl. AES/EBU Audio Output)				●	●					2ch Input and 1ch Loop-through, 8ch Embedded AES/EBU Output *1
EA-240A	Embedded Analog Audio Output Module				●	●					2ch (ch:Menu Select)Embedded Analog Output(XLR 5pin)*1
EA-240D	Embedded AEX/EBU Audio Output Module				●	●					8ch Embedded AES/EBU Output *1
<b>Auto Setup Probe</b>											
ASP-100	Auto Setup Probe Unit	●	●	●	●	●	●	●			*3
<b>Rackmount Adaptor</b>											
DR-904	Dual Rack Mount Adaptor							●			4RU Height
BP-920	Blank Panel for DR-904/920							●			
RS-1770	19-inch Rack Mount Adaptor	●	●					●			Fixed type, 7RU height
RS-1770T	19-inch Rack Mount Adaptor with Tilt Mechanism	●	●					●			4-Step Angle, 7RU height
RS-1710	19-inch Rack Mount Adaptor							●			Fixed type, 7RU height
RS-1710T	19-inch Rack Mount Adaptor with Tilt Mechanism							●			4-Step Angle, 7RU height
RS-2450T	Rackmount Adaptor				●						Fixed Tilt Angle Type
<b>Stand</b>											
STD-1770	Stand	●	●								
STD-1770T	Stand with Tilt Mechanism	●	●								Tilt (Axis:Center of Monitor):Up 90 degree/Down 10 degree
STD-1517	Stand							●			
STD-1517T	Stand with Tilt Mechanism							●			Tilt:Up 15 degree/Down 15 degree
STD-1722M	VESA Arm Stand	●	●					●			
STD-240T	Stand with Tilt Mechanism					●					Tilt (Axis:Center of Monitor):Up 45 degree/Down 8 degree*2
STD-900	Stand							●			Tilt Angle:Up 14 degree
STD-904	Stand							●			
STD-920T	Stand with Tilt Mechanism							●			Tilt Angle:Up 10 degree/Down 10 degree
<b>Tripod Mount Plate</b>											
AT-900	Tripod Mount Plate							●			1/4 & 3/8 inch hole plate
<b>Handle</b>											
GR-1770	Handle	●	●					●			
GR-904	Handle							●			
<b>LCD Protection Cover</b>											
PP-1751	Protection Cover for HLM-1751WR			●							Anti-Reflection Coating
PP-1750	Protection Cover for HLM-1705WR						●				Anti-Reflection Coating
PP-904	Protection Cover for HLM-904WR							●			Anti-Reflection Coating
<b>Battery Bracket</b>											
BB-1750A	Battery Bracket (Anton Bauer Type)	●	●								
BB-1750V	Battery Bracket (V-Mount Type)	●	●								
BB-904A	Battery Bracket (Anton Bauer Type)							●			
BB-904V	Battery Bracket (V-Mount Type)							●			
<b>Hood</b>											
MH-2570	Folding Hood	●									
MH-1750	Folding Hood	●	●					●			
MH-904	Folding Hood							●			
<b>Carrying Case</b>											
CC-E25	Hard Carrying Case	●									
CC-E17	Hard Carrying Case	●									
CC-3250	Hard Carrying Case				●						
CC-2450B	Hard Carrying Case					●					
CC-1751	Hard Carrying Case			●							
CC-1705	Hard Carrying Case							●			
CC-905	Hard Carrying Case							●			
SO-016	Soft Carrying Case							●			
CC-5013	Hard Carrying Case								●		
CC-7012	Hard Carrying Case									●	

**Note**

- \*1: Either one optional module can be installed. Up to 4ch SDI input is available if D3G-240A or D3G-240G is installed.
- \*2: Standard Tilt Stand has a tilt mechanism with axis at bottom of monitor (up 15 degree and down 8 degree).
- \*3: Please refer page9 regarding integrated software for each monitors and Rev# for ASP-100.



		HLM-1705WR	HLM-905WR	HLM-5013WR	HLM-7012WR	
Display Panel	Type of Panel	LCD		LCD / LED Backlight		
	Number of Pixel	Effective Number of Pixel	WXGA (15:9) 1280x768		WVGA (15:9) 800x480	
		Number of Pixel in 16:9	1280x720		800x450	
	Display Size (Diagonal)	Display Size (Viewing Area)	17.0"	8.9"	5.0"	7.0"
		in 16 : 9	16.7"	8.8"	4.9"	6.9"
	Brightness	(Specification of Panel)	370cd/m <sup>2</sup>	350cd/m <sup>2</sup>	180cd/m <sup>2</sup>	290cd/m <sup>2</sup>
	Contrast Ratio (typical)		800:1	1000:1	500:1	1000:1
Display Color		16.77 million colors / 8bit				
View Angle (up & down, left & right typical)		178°		176°		
Rating & Performance	Power Requirement	AC	AC100-120V / AC200-240V		AC100-240V (When using AC Adaptor)	
		DC	-		DC12V (10.5-18V)	
	Power Consumption (max)	AC (Standard Spec)	40W	23W	1.7A	
		DC (Standard Spec)	-	20W / 1.6A	34W	30W
	Dimensions WxHxD mm (inch)	428x301x80 (16.9x11.9x3.2)	222.4x173x69.5 (8.8x6.8x2.8)	481x88.1x56.2 (18.88x3.5x2.22)	481x132.6x56.2 (18.88x5.25x2.22)	
	Rack-mountable Space	7U	4U	2U	3U	
	Weight kg(lbs) *Excluding stand	Approx 6.0kg (13.22 lbs)	Approx 2.0kg (4.41 lbs)	Approx 1.7kg (3.74 lbs)	Approx 2.1kg (4.63 lbs)	
	Supporting Formats	SDTV	480i / 59.94, 575i / 50			
		HDTV	1035i/59.94/60, 1080i/50/59.94/60 1080p/23.98/24/25/29.97/30/50/59.94/60 1080psF/23.98/24/29.97/30 720p/23.98/24/25/29.97/30/50/59.94/60		1080i/50/59.94/60 1080p/23.98/24/25/29.97/30/50/59.94/60 1080psF/23.98/24/29.97/30 720p/23.98/24/25/29.97/30/50/59.94/60	
	Video	Input/Output	3G/HD/SD-SDI	● 2 Inputs, 1 Output		
VBS			● 1 Input/Output (TH)		-	
RGB/YpBPr			-			
Analog PC			-			
HDMI			-			
External Sync			-			
Audio	Input	Analog Audio Input	● (st min jack)		-	
	Output	Embedded Analog 2ch Output	● (st min jack)		-	
		Embedded AES/EBU 8ch Output	-			
	Display	Embedded Audio Level Meter Display	● (8ch)		● (16ch)	
		Rating Output	1W			
	Speaker	Analog Audio Output	● (Monaural)		-	
		Embedded Digital Audio Output	●			
5.1ch Surround Down-mix Output	●					
Headphone Output	●					
Command Control	Parallel Remote	●		-		
	Serial Remote (Controlled by SRC-301Z)	●		-		
	Serial Remote (RS-485)	▲ (To be customized)		-		
	USB Mouse	●		-		
Infrared rays Remote (Controlled by RCT-30A)	-					
Function	Display	Built-in Test Signal	● (3 types)		-	
		Marker	Safety Marker: 100% + 80~99% (Every 1% step) Area Marker: 4:3 (at 16:9), 13:9, 14:9, 15:9, 16:9 (at 4:3), 1.85:1, 2.35:1 Cross Marker: Cross, 5x5, 10x10		Safety Marker: 100%+80~99% (Every 1% step) Area Marker: 4:3 (at 16:9), 13:9, 14:9, 15:9, 16:9 (at 4:3), 1.85:1, 2.35:1	
		User Marker	● (10 Markers)		-	
		User Marker (Number of Scene)	1	10 (After Ver2.0)		
		Shadow	Area Marker: 4:3 (at 16:9), 13:9, 14:9, 15:9, 16:9 (at 4:3) Shadow Level: 0%, 20%, 40%, 60%		-	
		WFM Display	●			
		Time Code	● (VITC, HD-SDI)		● (LTC / VITC1 / VITC2)	
		Vector	●			
		2 Screen Display (Left: Still Image Right: Moving Picture)	●		-	
		Full Screen Capture Display	-	● (1280x720)		-
		IMD (In Monitor Display)	-	●		-
		Video & TEST Signal Mix	-			
		Zoom Function	-			
	Others	Dot by Dot Display	●		-	
		Operating Time Display	●		-	
		Color Temp Memory	● 6500K / 9300K / 8 User Settings		● 6500K / 9300K / 1 User Setting	
		Color/Mono Switching	●		-	
		VBS COMB Filter	●		-	
		APT	● (ON/OFF, Frequency)		●	
		Backlight Dimmer	●		-	
		R/G/B Screen Display ON/OFF	● (MENU)		-	
		Scan Selection	NORMAL / UNDER		NORMAL / OVER / 4:3ZOOM	
		Aspect Selection	4:3/16:9 (SDTV)		AUTO / 4:3 / 16:9	
		I/P Conversion Mode	FIELD / FRAME		FRAME	
		External Memory	● (USB)		-	
		Saving Still Image (in USB)	-	● (Maximum 32 Frames)		-
		Function Key	● 2		-	
LED Alarm Display	● (SDI ERROR)		-			
SDI Channel Lock Setting	●		-			
USB Memory Version-up	●		-			

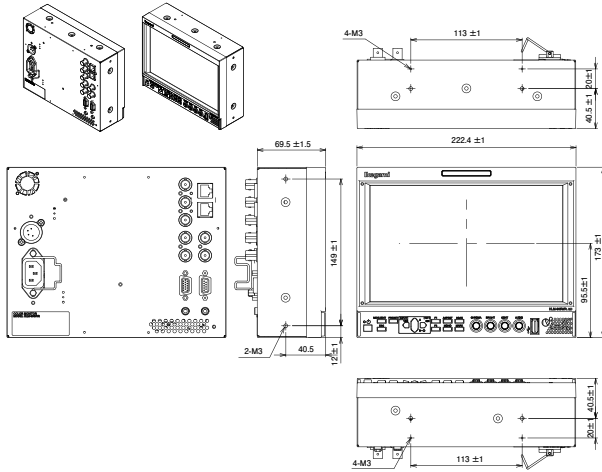
● : Standard, ▲ : Option

\*1 EIAJ ED-2810 dark place, partial lighting contrast

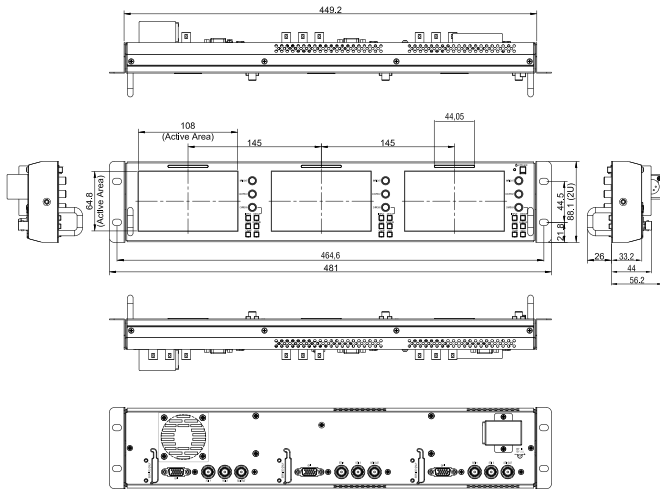
\*2 SMPTE425M-A/B, YPBPR, 4:2:2

# Dimensions

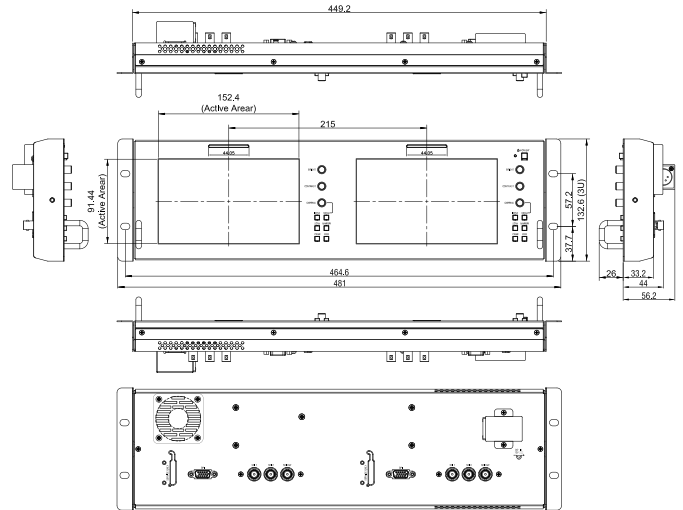
## HLM-905WR



## HLM-5013WR



## HLM-7012WR



Unit:mm

Design and specifications are subject to change without notice.



U125J155-SI-F3.5 Printed in Japan

### Ikegami Tsushinki Co.,Ltd.

■ URL : <http://www.ikegami.co.jp/en/>

- Head Office : 5-6-16 Ikegami, Ohta-ku, Tokyo 146-8567, Japan ..... TEL.03-5700-1111 / FAX.03-5700-1137
- Overseas Sales Division : 5-6-16 Ikegami, Ohta-ku, Tokyo 146-8567, Japan ..... TEL.03-5700-4117 / FAX.03-5748-2200
- Beijing Office : Room No.307 Tower B, Jia Tai International Mansion No.41 East Fourth Ring Road, Chaoyang District, Beijing China ... TEL.010-85710350 / FAX.010-85711804

### Ikegami Electronics (U.S.A.), INC.

■ URL : <http://www.ikegami.com>

- Headquarters : 37 BROOK AVENUE, MAYWOOD, NJ 07607 ..... TEL.(201) 368-9171 / FAX.(201) 569-1626

### Ikegami Electronics (Europe) GmbH

■ URL : <http://www.ikegami.de/>

- Headquarters : Ikegami Strasse 1, D-41460 Neuss, Germany ..... TEL.02131-1230 / FAX.02131-102820
- U.K. Branch : 1 Windmill Business Village, Brooklands Close, Sunbury on Thames, TW167DY, England ..... TEL.01932-769700 / FAX.01932-769710

### Ikegami Electronics Asia Pacific Pte.Ltd.

■ URL : <http://sg.ikegami.co.jp>

- Headquarters : 1 Tampines Central 5, #3-3 CPF Tampines Building, Singapore 529508 ..... TEL.6260-8820 / FAX.6260-8896

